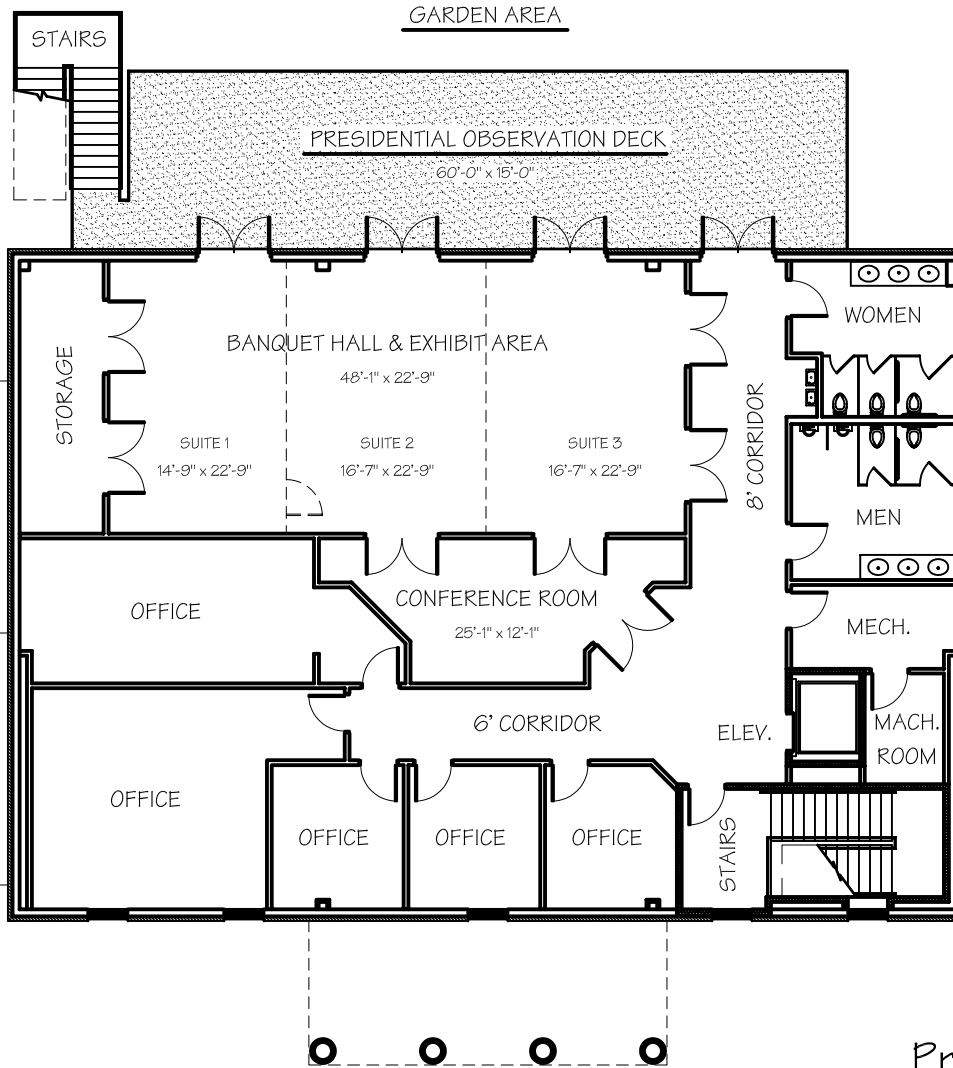


Garden Area Includes:

- President trail and monuments
- Defining Moments (Signs and Audio)
- Gazebo and Snack Area
- Picnic Area
- Presidential Green



Presidents Park

Second Floor Layout
 211 Water Country Parkway
 Williamsburg, VA. 23185

Phone: (757) 259-1121 Fax: (757) 220-2901

www.presidentspark.com

NOT TO SCALE - FOR ILLUSTRATION PURPOSES ONLY